

sheet notes

1. see civil drawings for parking and grading layout.

aircraft drive
site access

102'

102'

102'

ada

ada

191'

191'

future
hangar bldg. III

future
hangar bldg. II

hangar bldg. I

2 HR. firewall
per IBC section 706
area 7656sf

taxiway access

taxiway access

taxiway access

TWV
taxiway access

lake hood hangars

61 NORTHARCHITECTS
3400 SPENARD RD. STE 12
ANCHORAGE AK 99503
PH 907 274 4446



revisions
06 13 2017
2 HR. fire wall

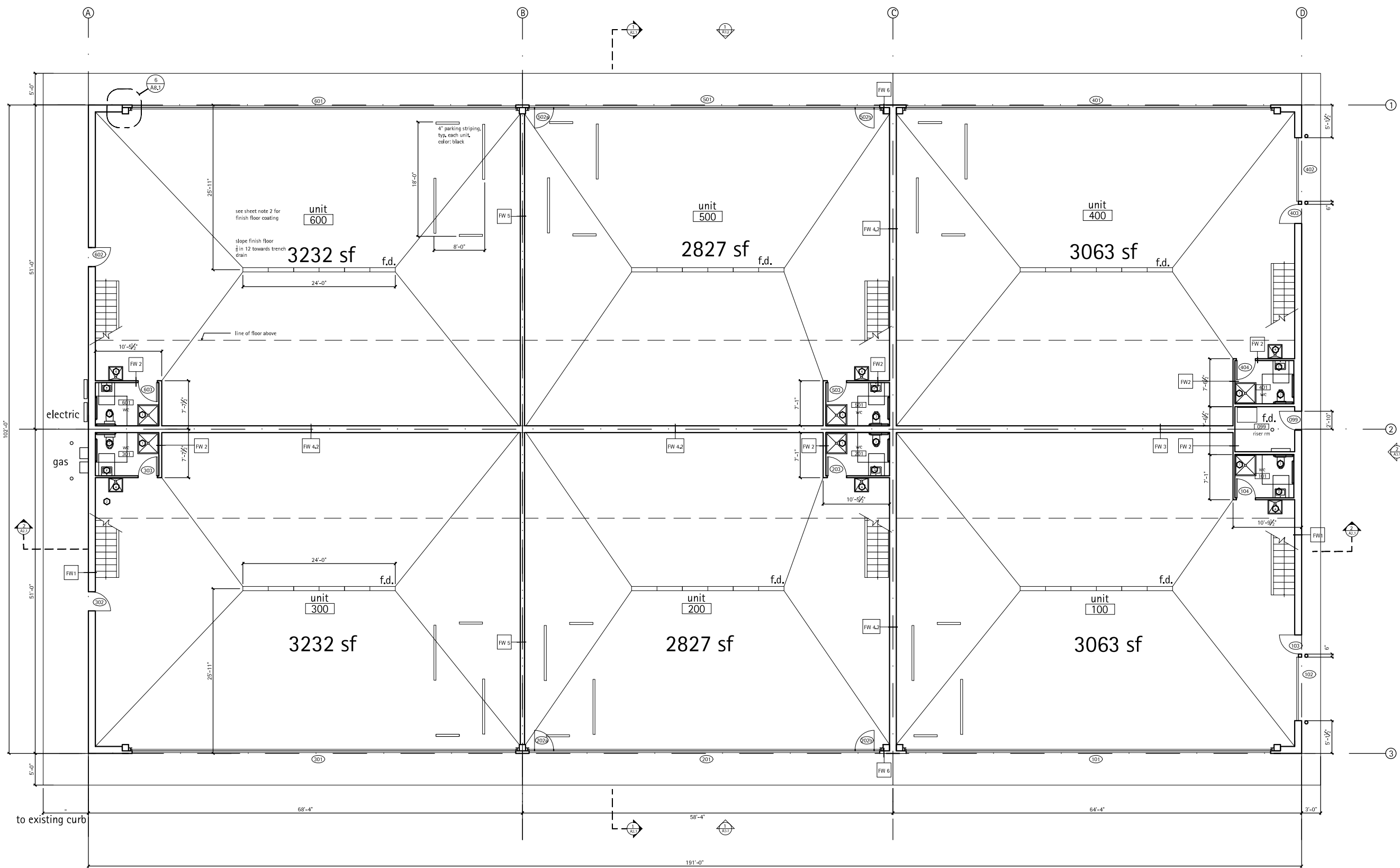
architectural site plan

2 12 2017

1 site plan
scale 1" = 500'



A 0.1



lake hood hangars

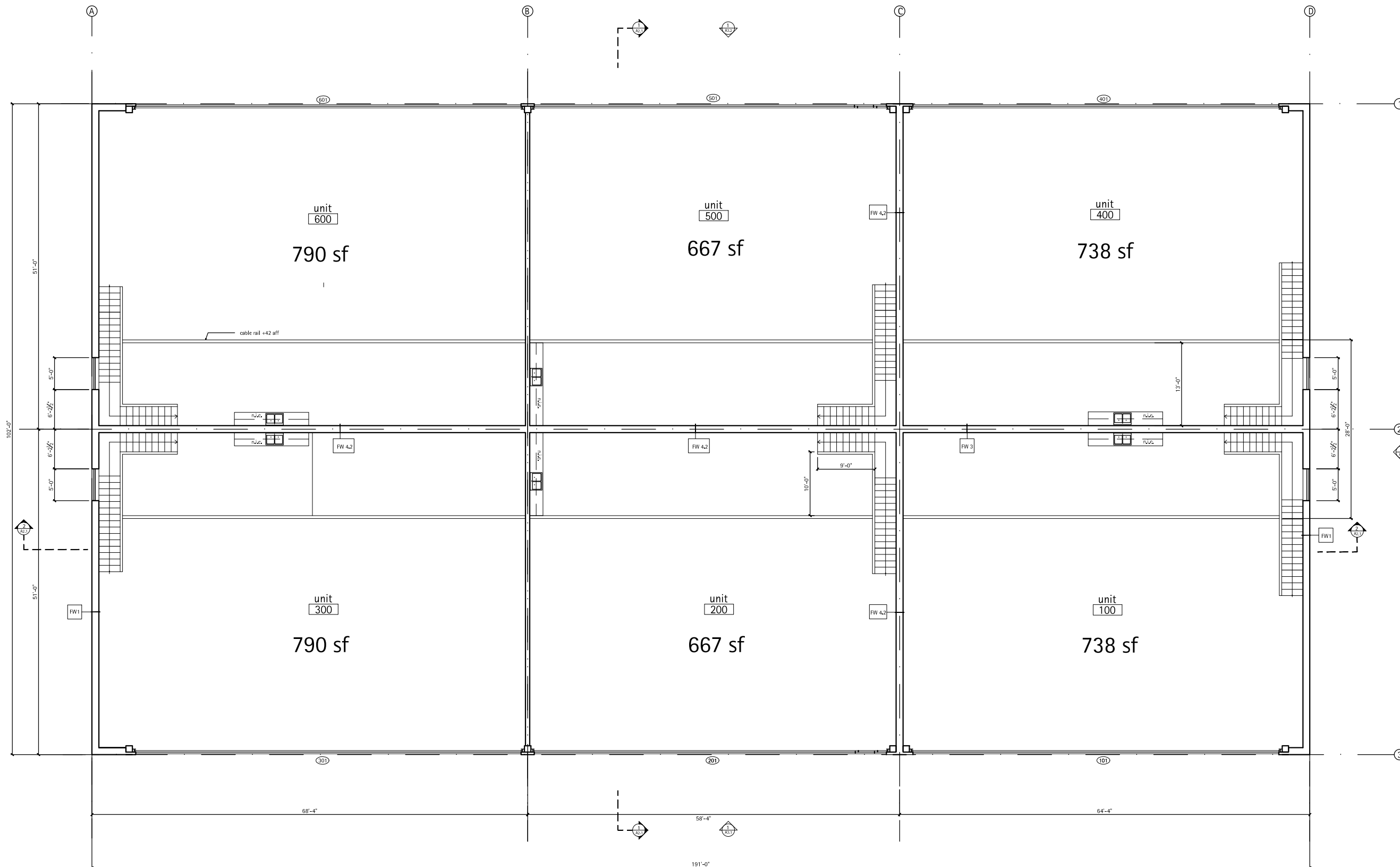
61 NORTHARCHITECTS
 3400 SPENARD RD, STE 12
 ANCHORAGE AK 99503
 PH 907 274 4446



- revisions
- 04 03 2017
move door 202, 502
 - 04 10 2017
add door 202a, 502a
 - 06 13 2017
add wall type
note grid 'C'

first floor plan

02 12 2017



lake hood hangars

61 NORTHARCHITECTS
 3400 SPENARD RD. STE 12
 ANCHORAGE AK 99503
 PH 907 274 4446



- revisions
- 04 03 2017
 - 06 13 2017
add wall type
grid 'C'

mezzanine plan

02 12 2017

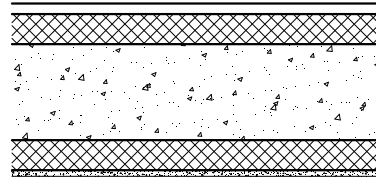


revisions
05 02 2017
added door

02 12 2017

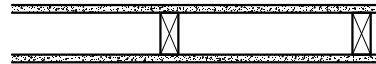
wall types

FW 1



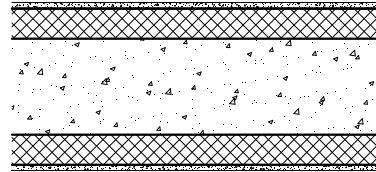
EXTERIOR WALL
1/2" GWB
ICF 8" CONCRETE CORE
2 1/2" FOAM INSULATION EA. SIDE
22 GA. MTL SIDING

FW 2



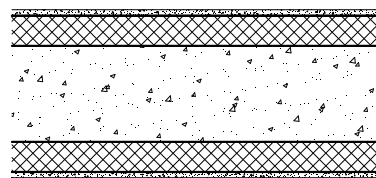
INTERIOR WALL 1HR. RATED
PER UL 305
1 LAYER OF 5/8" GWB TYPE "X"
2X4 WOOD STUDS AT 16" O.C.
1 LAYER OF 5/8" GWB TYPE "X"
CEILING 2 LAYERS OF 5/8" GWB TYPE "X"
PER 7.22.6.2. "1"

FW 3



INTERIOR WALL
1/2" GWB
ICF 8" CONCRETE CORE
2 1/2" FOAM INSULATION EACH SIDE
1/2" GWB

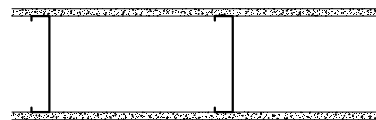
FW 4.2



INTERIOR WALL
1/2" GWB
ICF 8" CONCRETE CORE
2 1/2" FOAM INSULATION
1/2" GWB

SAME AS 3 EXCEPT 2 HR. FIRE RATED
PER IBC 706 TABLE 7.21.1 "2"

FW 5



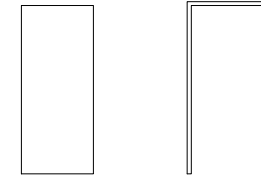
INTERIOR WALL
1 LAYER OF 1/2" GWB
8" METAL STUDS AT 16" O.C.
1 LAYER OF 1/2" GWB

FW 6



EXTERIOR NON-STRUCTURAL WALL
22 GA. METAL SIDING
1 LAYER OF 1/2" DENSDECK
3 1/2" METAL STUDS AT 16" O.C.
FOAM INSULATION
10 MIL. VAPOR RETARDER
1 LAYER OF 1/2" GWB

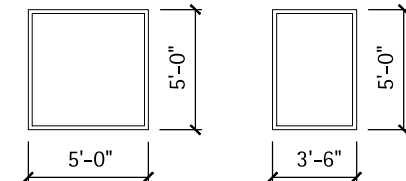
door & frame type



door type a frame type

window schedule

window frames fiberglass,
color: white



A (4) each building double pane low e safety glass
B (5) each hangar door double pane low e safety glass

door schedule

no	door				frame			notes
	size w x h	type	material	color	type	material	color	
101	57'-4" x 20'-0"	hydraulic	insul. metal	ff	custom	metal	white	windows
102	10'-0" x 10'-0"	overhead	insul. metal	ff	custom	metal	white	
103	3'-0" x 7'-0"	a	insul. fiberglass	white	hm	metal	white	
104	3'-0" x 7'-0"	a	solid core wood	white	kd	metal	white	
201	55'-2" x 20'-0"	hydraulic	insul. metal	ff	custom	metal	white	windows
202a	3'-0" x 7'-0"	a	insul. fiberglass	white	hm	metal	white	
202b	3'-0" x 7'-0"	a	insul. fiberglass	white	hm	metal	white	
203	3'-0" x 7'-0"	a	solid core wood	white	kd	metal	white	
301	60'-5" x 20'-0"	hydraulic	insul. metal	ff	custom	metal	white	windows
302	3'-0" x 7'-0"	a	insul. fiberglass	white	hm	metal	white	
303	3'-0" x 7'-0"	a	solid core wood	white	kd	metal	white	
401	57'-4" x 20'-0"	hydraulic	insul. metal	ff	custom	metal	white	windows
402	10'-0" x 10'-0"	overhead	insul. metal	ff	custom	metal	white	
403	3'-0" x 7'-0"	a	insul. fiberglass	white	hm	metal	white	
404	3'-0" x 7'-0"	a	solid core wood	white	kd	metal	white	
501	55'-2" x 20'-0"	hydraulic	insul. metal	ff	custom	metal	white	windows
502a	3'-0" x 7'-0"	a	insul. fiberglass	white	hm	metal	white	
502b	3'-0" x 7'-0"	a	insul. fiberglass	white	hm	metal	white	
503	3'-0" x 7'-0"	a	solid core wood	white	kd	metal	white	
601	60'-5" x 20'-0"	hydraulic	insul. metal	ff	custom	metal	white	windows
602	3'-0" x 7'-0"	a	insul. fiberglass	white	hm	metal	white	
603	3'-0" x 7'-0"	a	solid core wood	white	kd	metal	white	
099	3'-0" x 7'-0"	a	insul. fiberglass	white	hm	metal	white	